

CRUISER GARAGE



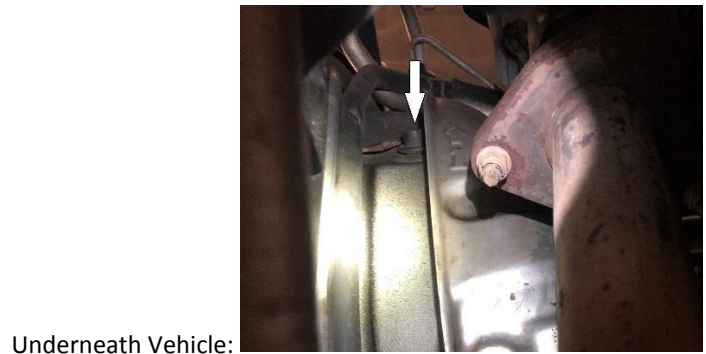
AC Drain Extension Kit (ADEK) for 98-07 Land Cruiser / LX470 and 03-09 GX470

Thank you for purchasing from Cruiser Garage! If you have any questions please contact us at info@cruiser-garage.com

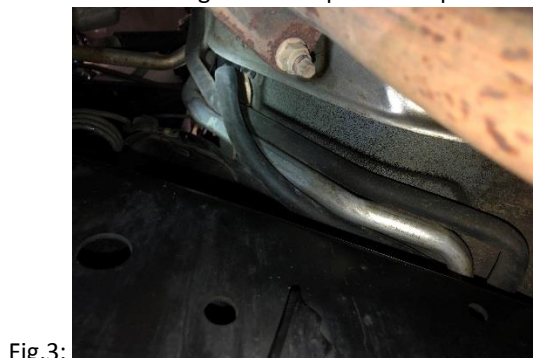
QTY	Parts Included
1	Elbow
1	Tubing
3	Zip-Ties

Tools Required: Wire Cutters (to cut zip-tie excess)

1. Insert elbow in one end of the provided tubing.
2. Locate the factory AC drain line on the right side of the firewall.



3. Insert elbow into the opening of the factory drain line (moving elbow side to side helps). Make sure not to push the grommet through the firewall.
4. Decide how you would like to run the line. We chose to run it this way (Fig.3, 4), but there are a few other ways as well. Please remember to not overtighten the zip-ties and pinch the line.



5. Secure the line with the zip-ties where needed. In our case, one zip-tie around the body mount was enough.
6. Cut excess off zip-ties. If required, cut excess off the end of the extension line. Done!

Thanks again for your purchase! We hope you enjoy it!